

ST55 DEMO UserManual



ISO18000-6C

This example is for UHF models.

Only operate ISO18000-6C

protocol UHF tags

Support label band:

840-845 (China)

920-925 (China)

902-928 (open band)

865-868 (Europe)

"UHF" Download link:

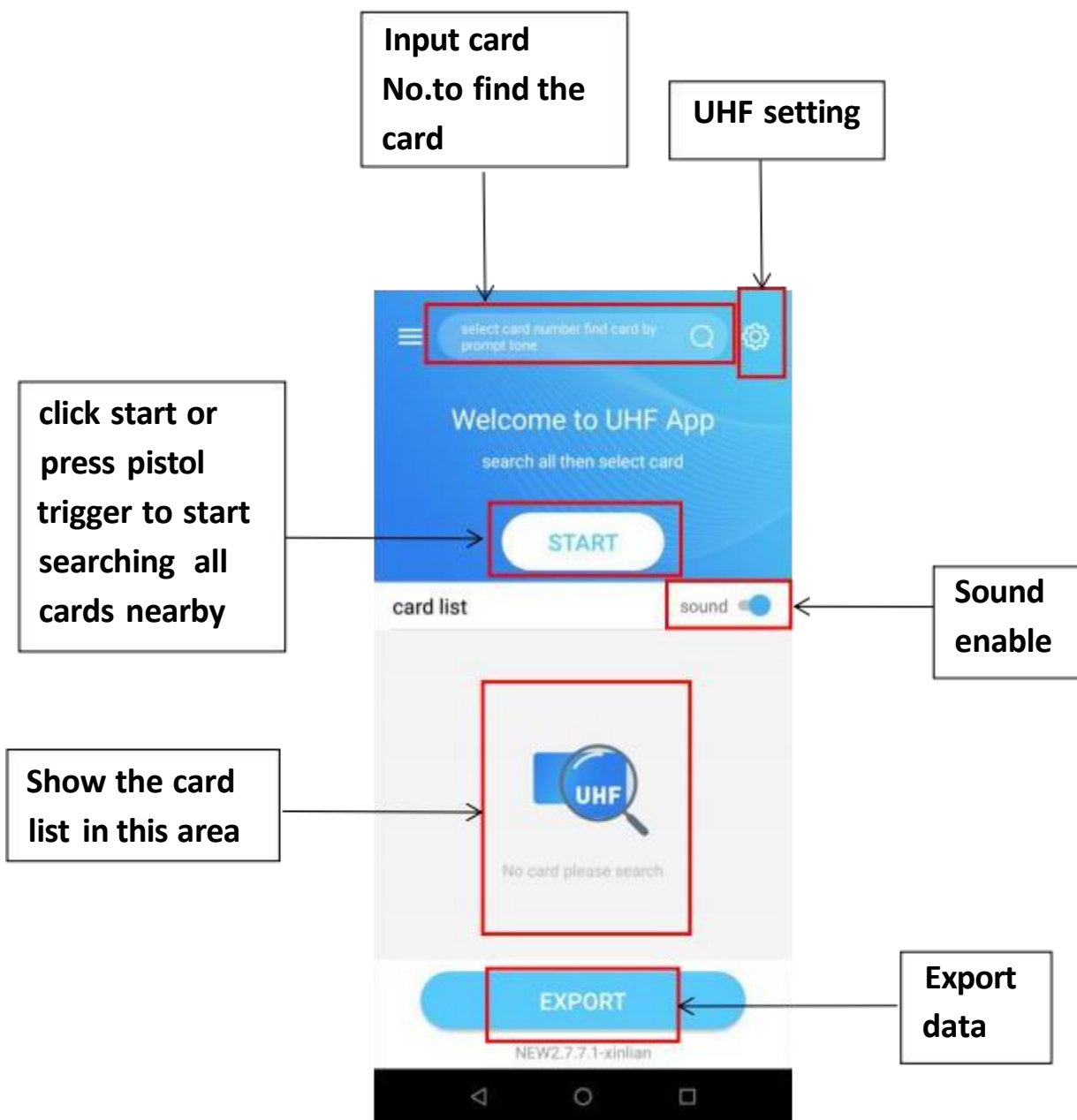


Start Use

Swipe up on the main screen to open the application list, open the "UHF" application to enter the application main interface.

("UHF" are installed by default on the device. If cannot found the relevant applications, please contact technical support)

UHF Demo main interface

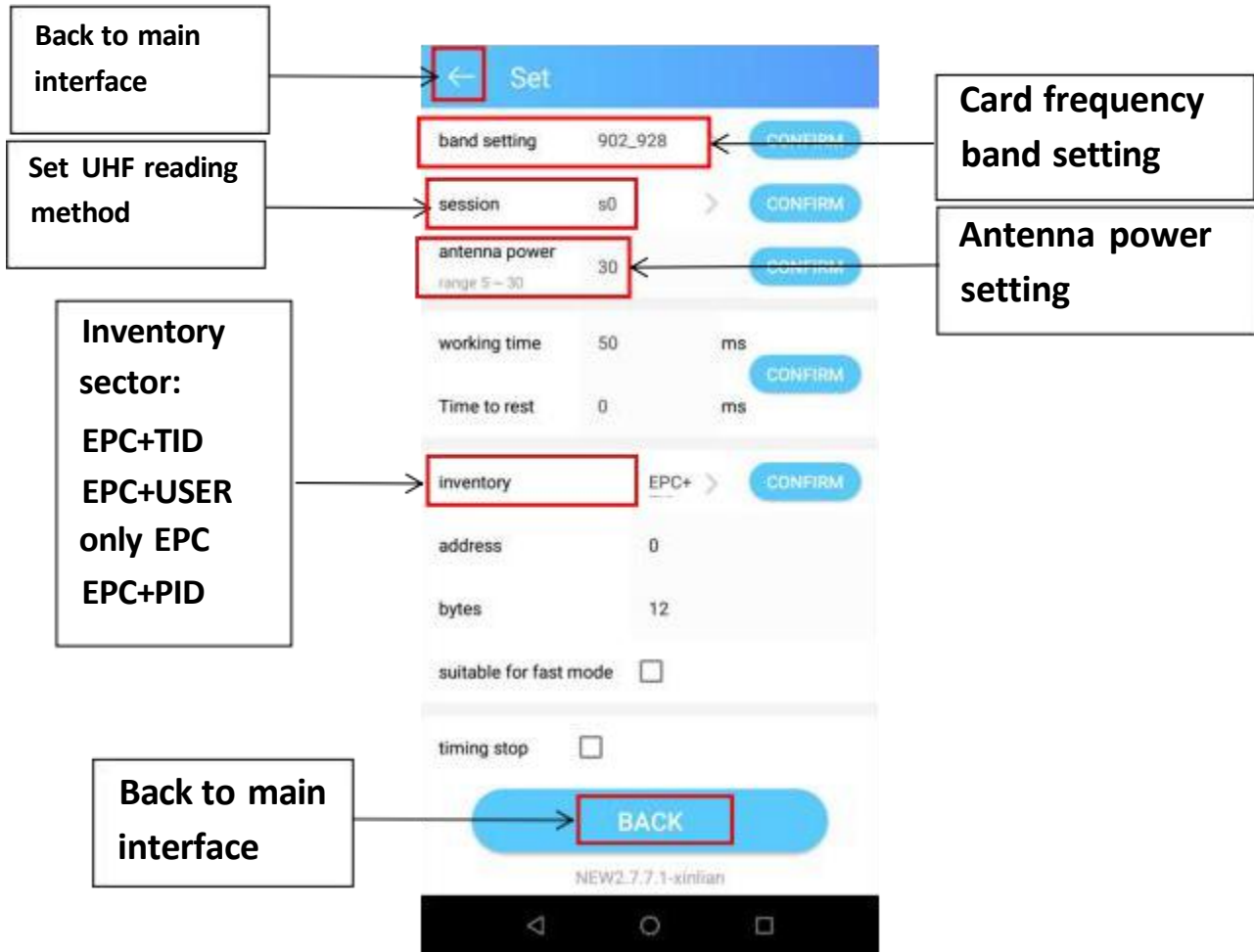


UHF settings

Select the band of the tag that you need to read: 840-845(China)920-925(China) 902-928(open band) 865-868(Europe)

Set antenna power

Fill in power, the value is 0-30, the greater the value, the farther away from tag.



Card searching



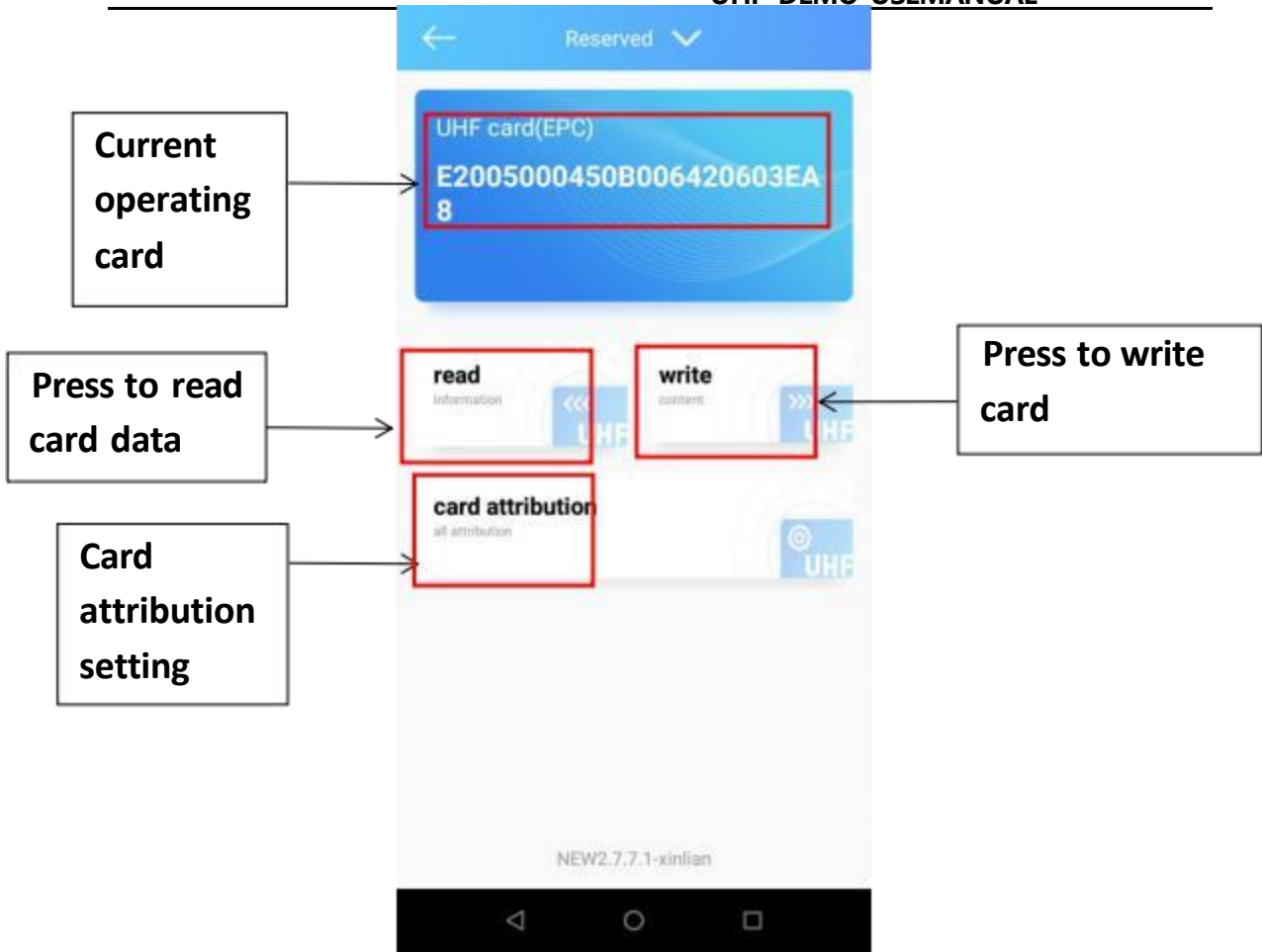
The Number of
card in range

Scanning time
consumption

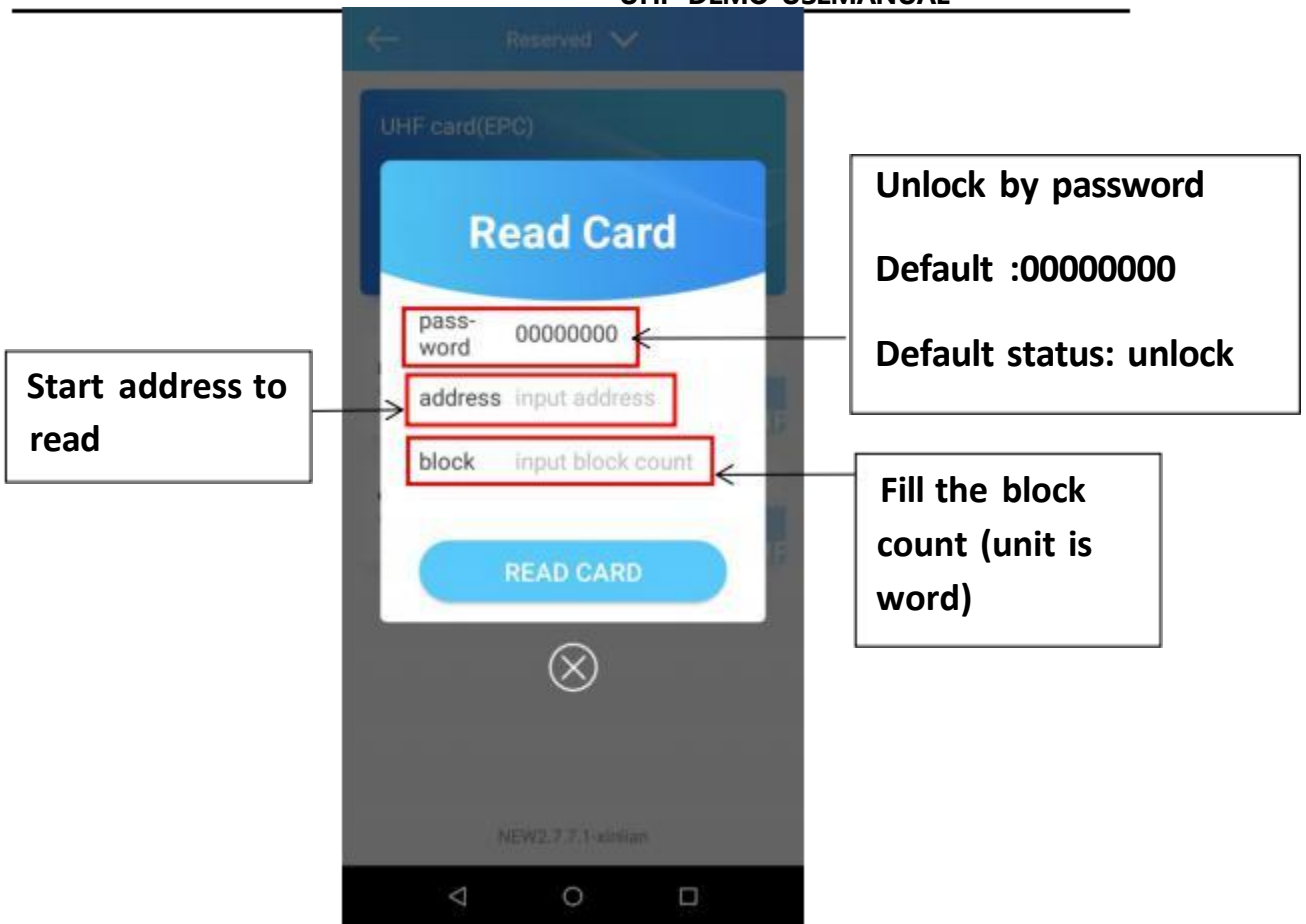
Scanning
frequency

Card
information
select one card
to operated
R/W

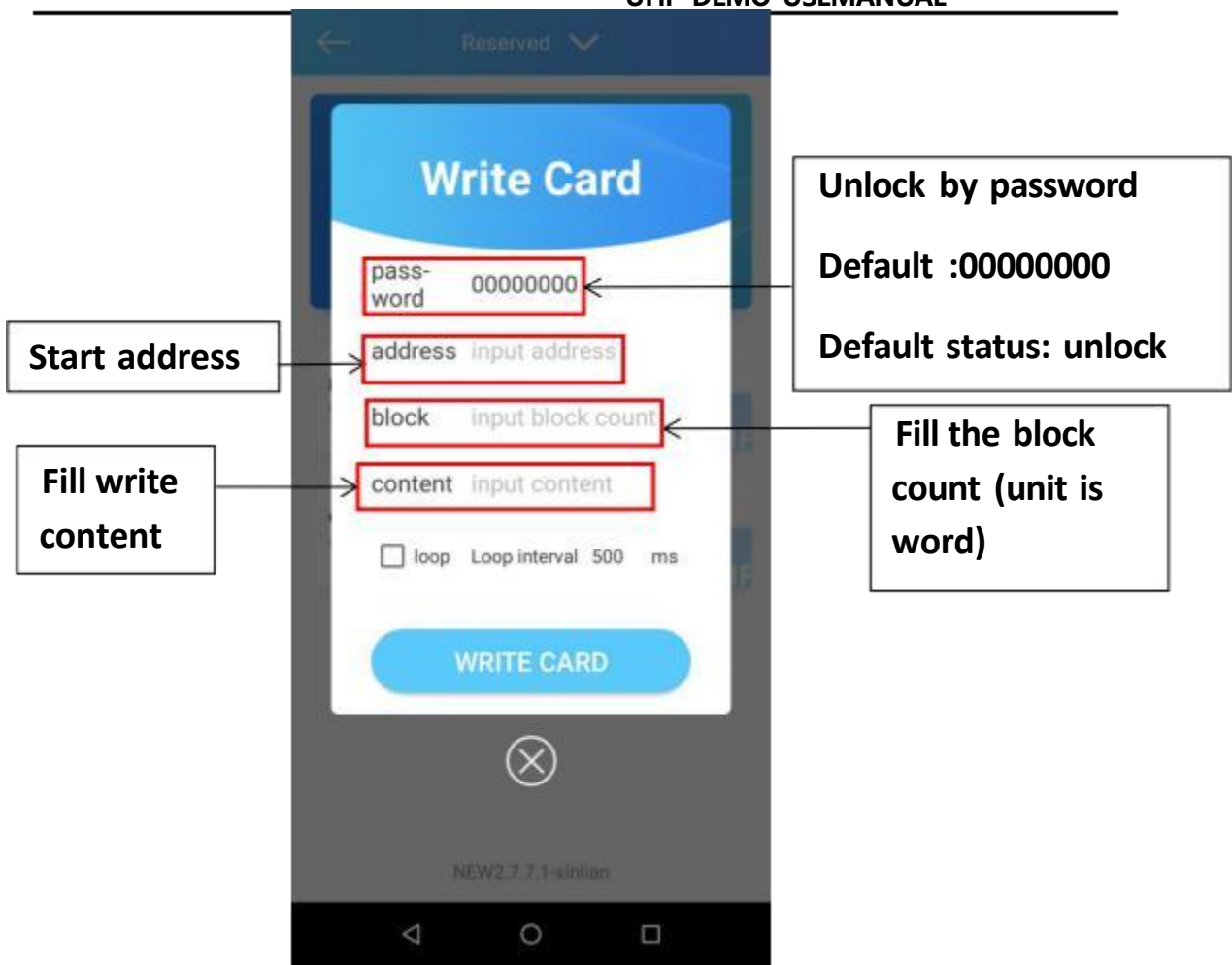
R/W Card



Read Card



write Card



Card attribution setting



Card attribution specification

Password: for update new Pwd ,or when you forget the current Pwd, input initial password choose password type (kill/success) then set new password

kill password: input kill password before kill the UHF tag.

access password: input access password before read/write UHF tag.

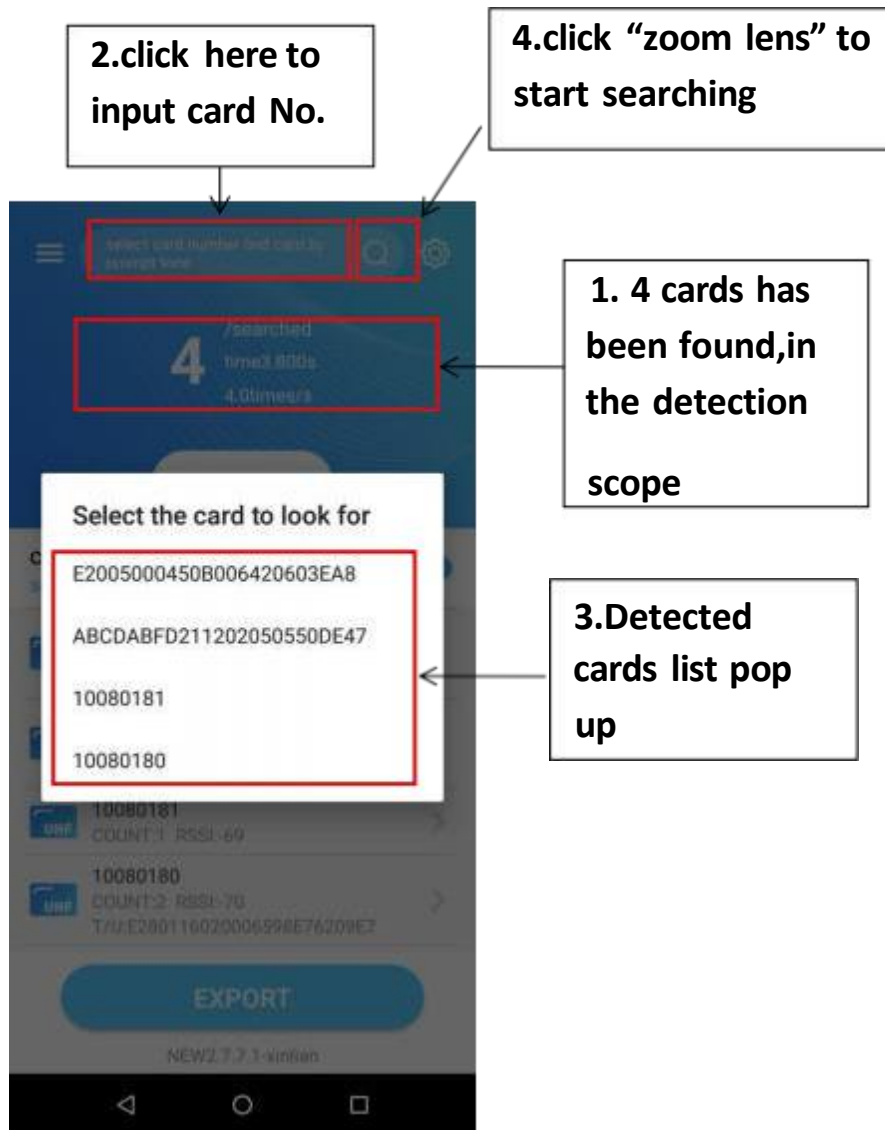
EPC:for operation EPC section, fill initial password for access the EPC, set EPC length (the unit by word) and create new EPC

lock:for lock or unlock the memory sector in UHF tags. Please set access password before this operation . after kill Pwd&Acc Pwd sector been locked ,only can be read by supply correct password but EPC TID and USER. These 3 sectors approval to write it by input access password.

Search Card by sound

base on the searched cards we can confirm the anyone card location by sound.

1. please notice how many cards is exist in the UHF antenna detection range.
2. Click the hint text" input card number find card by sound" in search box ,all detected cards ID will list and pop up for your selection.
3. Finally click the "zoom lens" icon to activated the search engine.



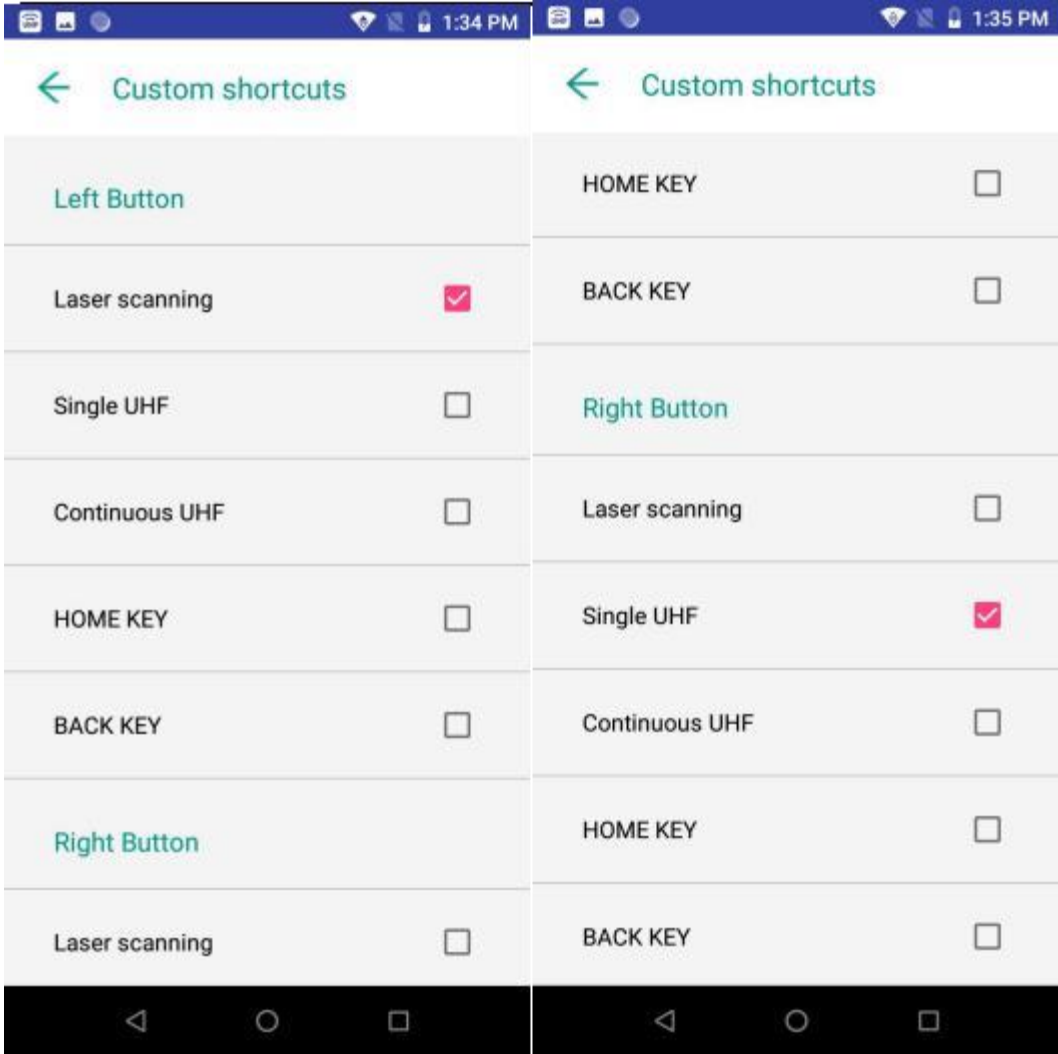
4. press "zoom lens" go into searching interface, the nearer distance from the target card the more dense hint sound. Finally judge the card location by beeper sound density. Press "stop" to halt searching.



Button Settings

Click Settings- >button settings

Set the left button/right button" single UHF "or" continuous UHF" .Then you can use" UHF" by holding the button .



("Scan" and" UHF" can not be used at the same time.)